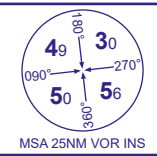


INSTRUMENT APPROACH CHART - ICAO

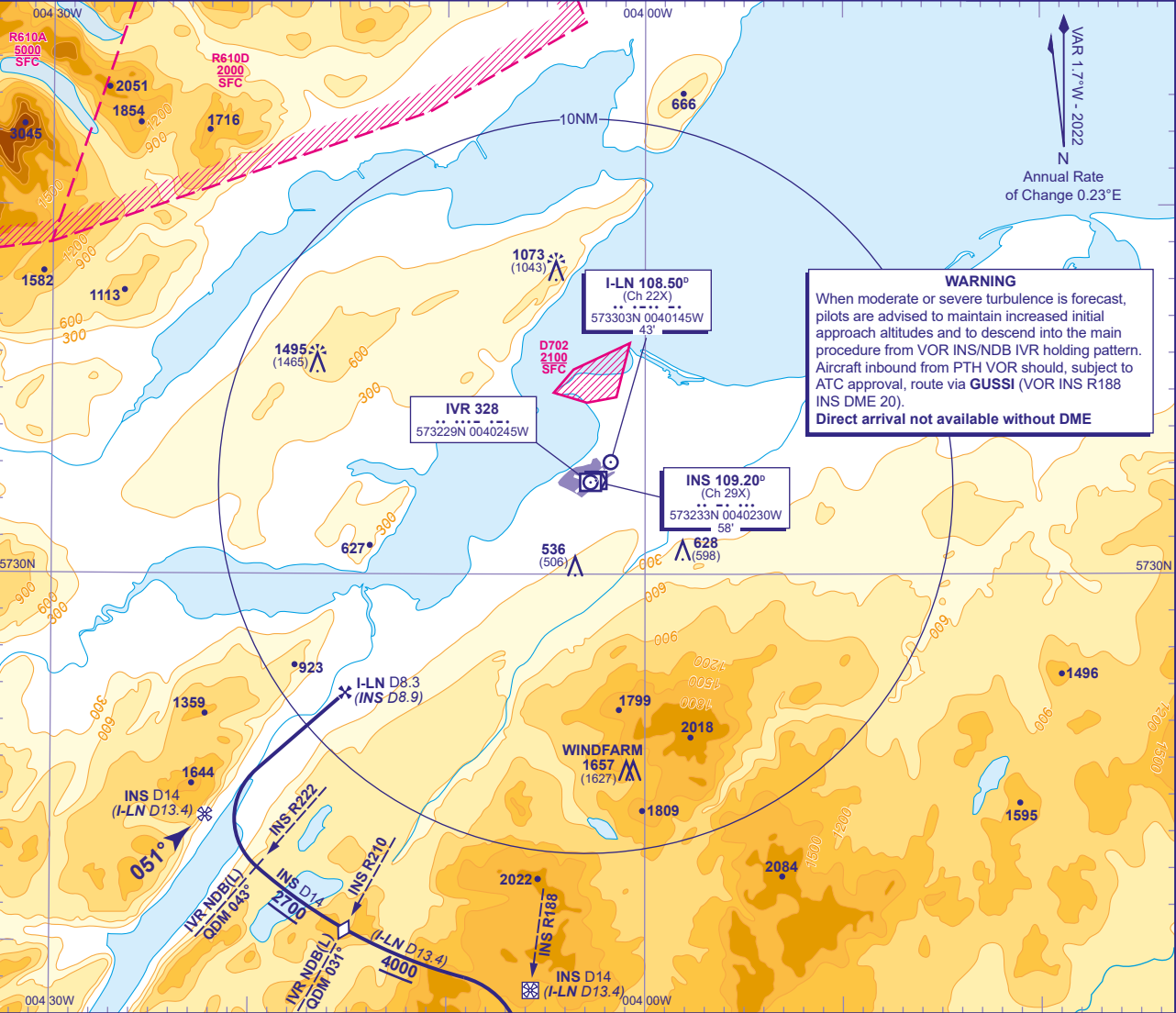
INVERNESS

Direct Arrivals  
ILS/LOC/DME  
RWY 05  
(ACFT CAT C)



TWR	118.405	INVERNESS TOWER	AD ELEVATION	31
RAD	122.605	INVERNESS RADAR	THR ELEVATION	30
ATIS	109.200	INVERNESS INFORMATION	OBSTACLE ELEVATION	1495 AMSL (1465) (ABOVE THR)
			BEARINGS ARE MAGNETIC	

TRANSITION ALTITUDE  
3000



**WARNING**  
When moderate or severe turbulence is forecast, pilots are advised to maintain increased initial approach altitudes and to descend into the main procedure from VOR INS/NDB IVR holding pattern. Aircraft inbound from PTH VOR should, subject to ATC approval, route via **GUSSI** (VOR INS R188 INS DME 20).  
**Direct arrival not available without DME**

**Arriving on N560 Northbound**  
Arrival from the south on VOR INS R188 (QDM 009°) **not below 5800**. Request ATC approval for DME arc arrival when within INS DME 40. After passing INS DME 25, with ATC approval, descend **not below 5000**. From INS DME 16 (I-LN DME 15.4) turn left to establish on INS DME 14 (I-LN DME 13.4) arc clockwise. When established, descend along the arc **not below 4000**. After crossing step down VOR INS R210 (IVR NDB(L) QDM 031°), continue descent to **2700**(2670), then from lead VOR INS R222 (IVR NDB(L) QDM 043°) turn right onto localizer. From FAF I-LN DME 8.3 (INS DME 8.9) at **2700**(2670), continue with ILS/LOC/DME final approach.